



RIBCAGE AIR ON 3DR SOLO

Designed from the ground up to be as light as possible for increased compatibility with gimbals and drones, the **Ribcage AIR Modified GoPro Hero4** is perfect for any aerial platform. Connect your favorite CS & C-Mount lenses for use on large gimbals or use the included M12 lens mount to use your camera with GoPro sized drones and gimbals. The Ribcage AIR features special mounting points for secure seating on **3DR's Solo**. Many distortion free wide angle lenses are available to get exactly the look you want.

All the lens mounting rings are easily removable for filter exchange and sensor cleaning. Combine up to two custom filters in camera at the same time. You won't need filters for all your different lenses anymore, just for the camera! Now you can use ND, cold mirror, NDVI and other custom wavelength filters with your M12 lenses, or lenses that have no filter threads on the front. Choose from our line of tried and tested high resolution lenses, or use your own. Browse through our library of **high resolution lenses** to find the right lens for your needs!



Still frame taken from the Ribcage Air on a 3DR SOLO



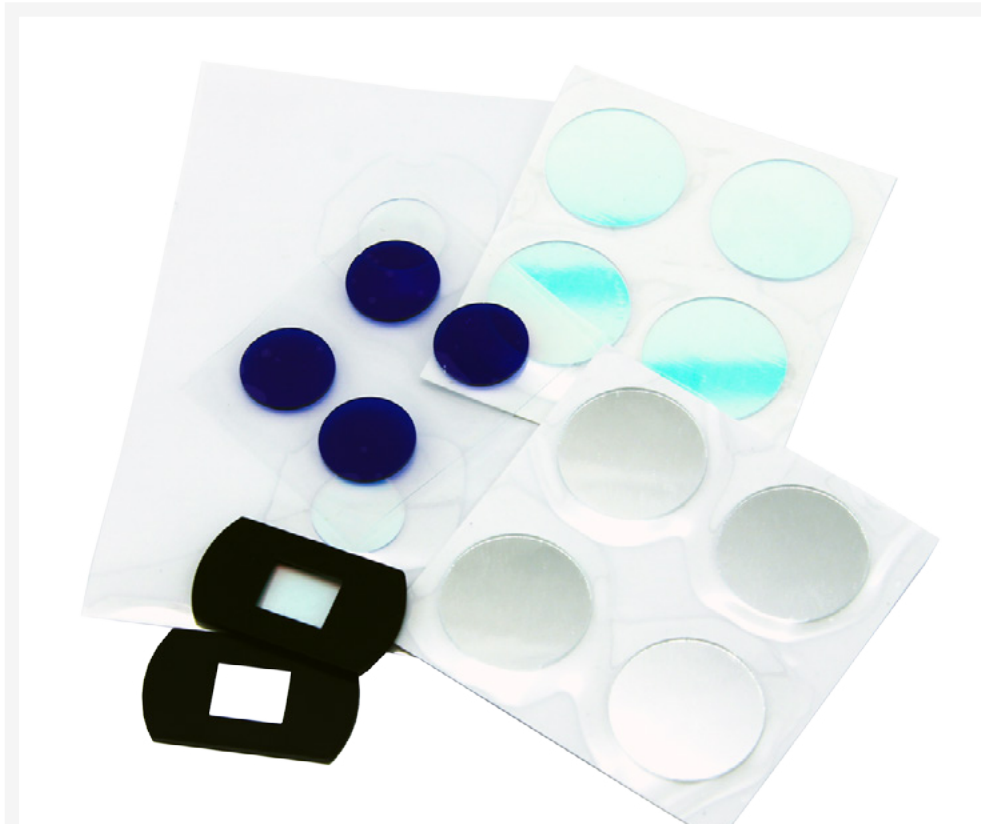
Still frame taken from the Ribcage Air on a 3DR SOLO

What you will need:

1. Ribcage Air modified Hero4 with M12 lens
2. 3DR SOLO drone
3. Custom cut filters (optional)
4. Dead Weight - Gimbal balancing kit



Ribcage Air modified GoPro on 3DR gimbal



Custom filters by Back-Bone for the Ribcage



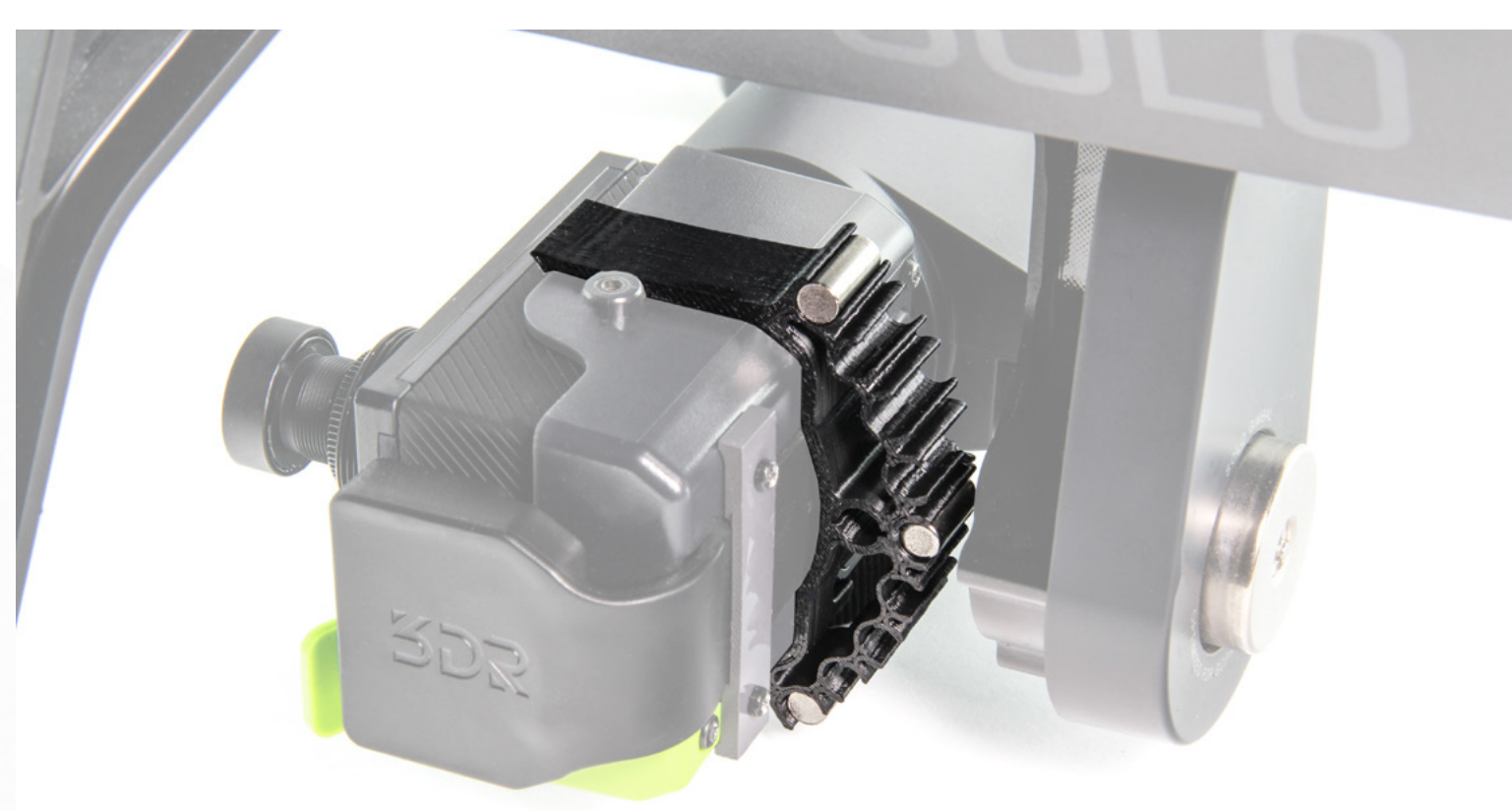
Ribcage Air Mod kit - SOLO pro bundle

Recommended lens for 3DR SOLO:

1. 1/2" or 1/2.3" M12 lenses 8mm and under
2. 10-12 grams or less
3. Properly balance gimbal after adding lenses or accessories
4. CS/C-Mount lenses not recommended for SOLO



M12 lenses for use on the 3DR SOLO



Dead weight highlighted on the 3DR SOLO gimbal

No more quarters and tape! Built specifically for the 3DR Solo gimbal, the DEAD WEIGHT balancing kit for Solo allows you to easily counterbalance lenses, filters and accessories mounted to your stock GoPro or Ribcage AIR modified cameras. Ultra-dense metals were chosen for the counterweights to pack the most punch in a tiny size. Almost 2x heavier than lead! Our easy to use snap-on mounting system clips easily onto the back of your Solo gimbal. You can then snap our custom weights into any of the 10 clip positions. Just position the weights until your camera is balanced vertically and then slide the entire assembly left or right to balance it horizontally. A balanced gimbal means more efficient operation, less stress on the motors and butter smooth video.

Features:

1. Balance your Ribcage AIR camera or GoPro with added filter accessory
3. Fast and easy setup
4. Smoother footage
5. Longer flight time with balanced gimbal
6. Reduces stress on gimbal motors

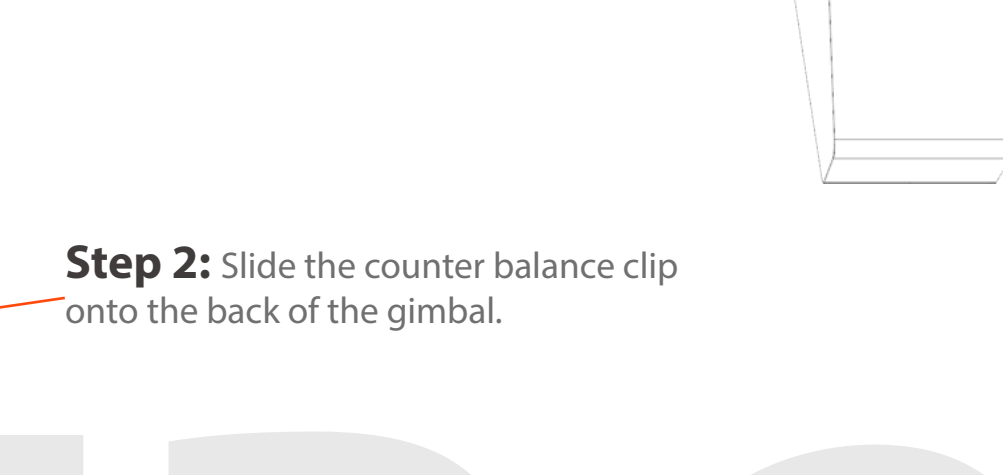
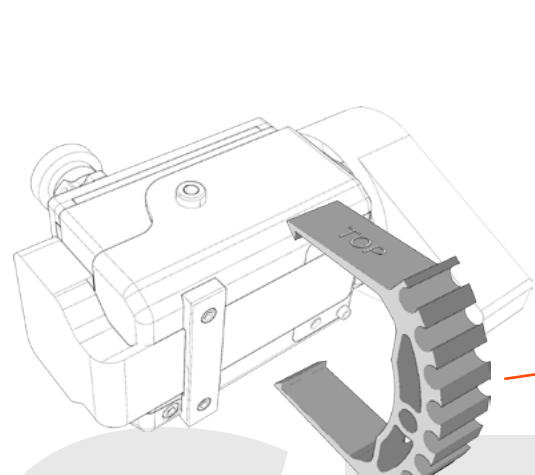
Dead weight setup:

Whether you have a Ribcage AIR with a sweet lens or a stock GoPro with an ND or lens hood our DEAD WEIGHT counterbalance system is perfect for correcting the balance on your Solo gimbal. Our tiny metal weights are almost twice as heavy as lead for the best performance possible in a tiny package. Properly balancing your gimbal will improve efficiency, give you smoother video and reduce stress and wear. Recommended for accessories and lenses and accessories 10g and under. Balancing your gimbal is done in four easy steps.

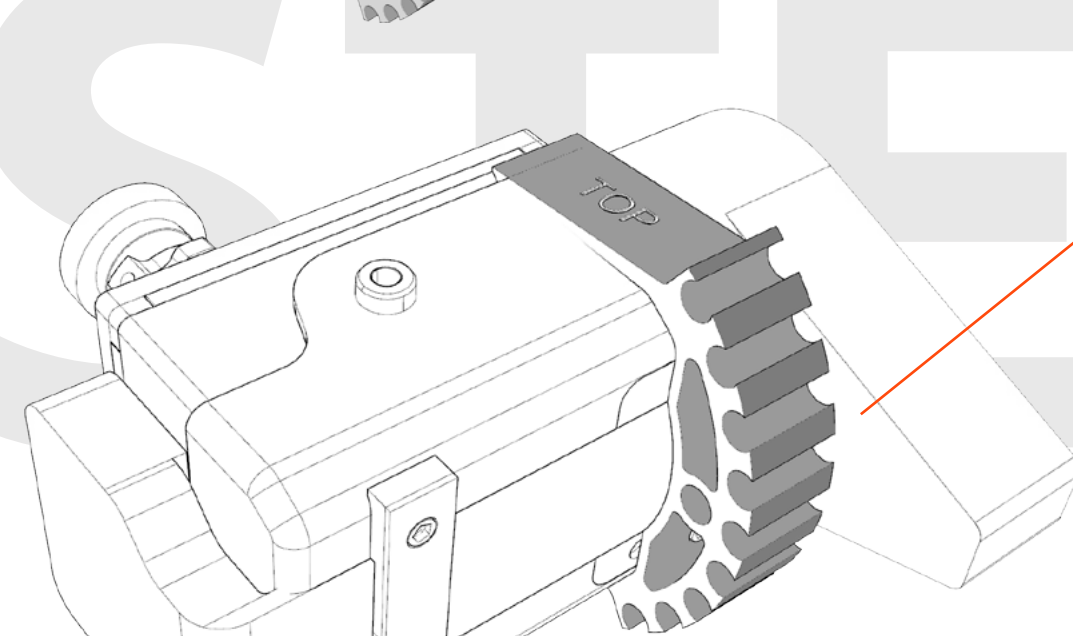
Step 1: All counter balacing is performed with the Solo gimbal turned off.

Remove the original aluminum plate from the rear of your Solo gimbal by unscrewing it.

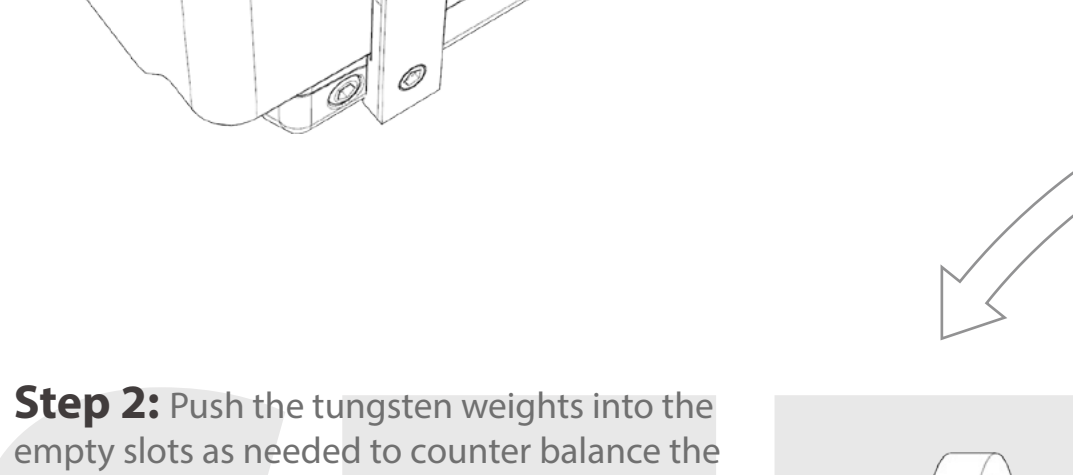
Replace this plate with the small plastic bracket provided in your counter balance kit.



Step 2: Slide the counter balance clip onto the back of the gimbal.

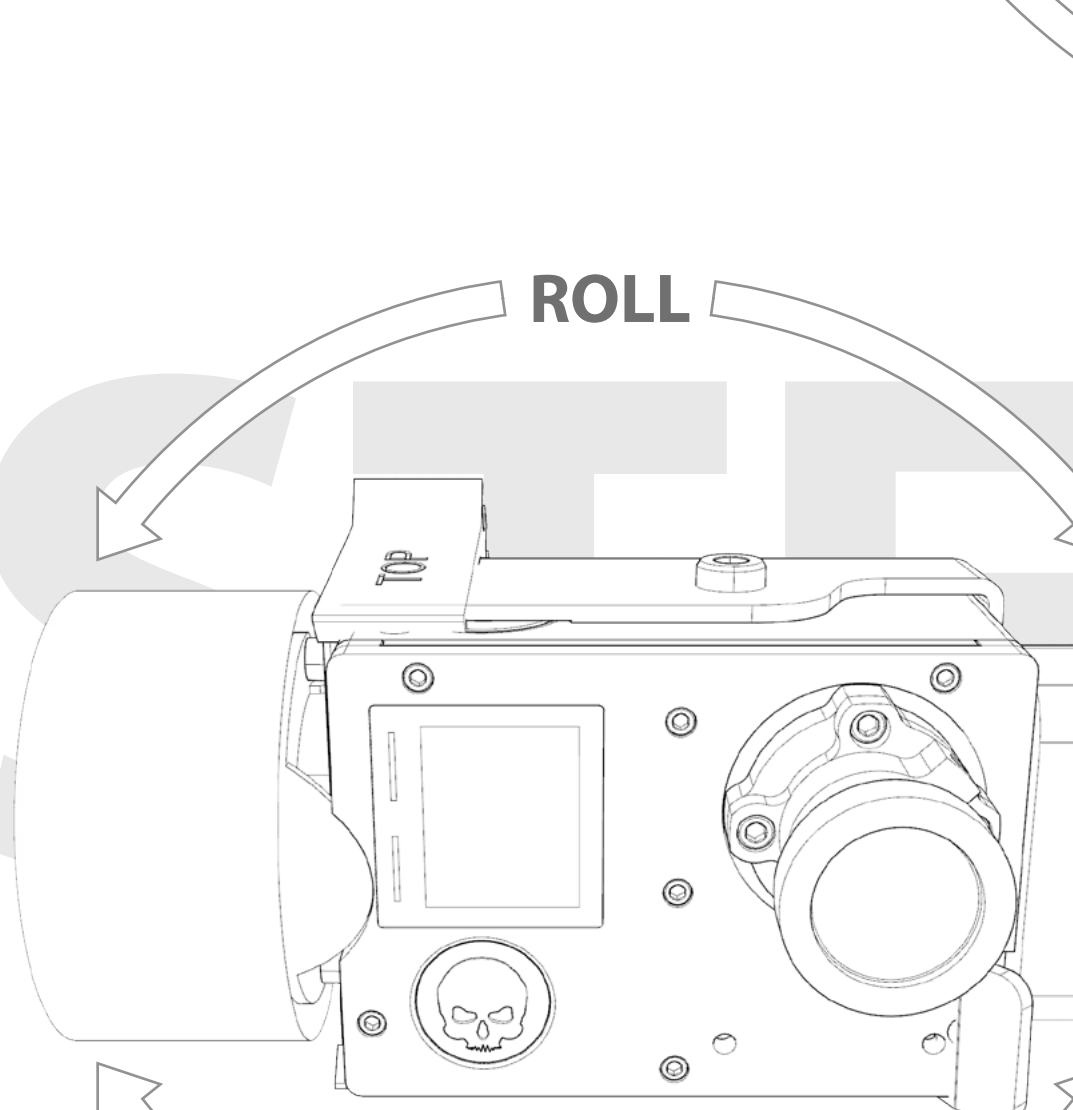
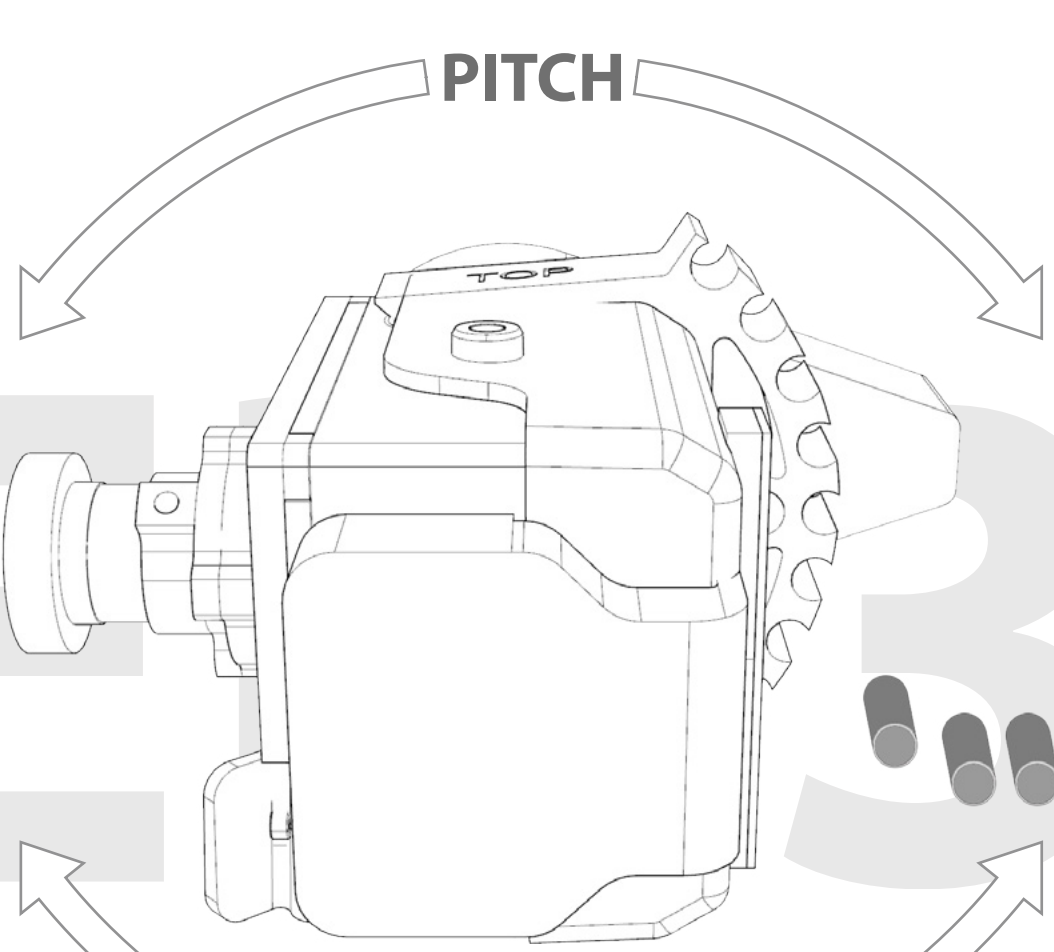


Ensure that the clip is properly engaged and the clip ends have properly snapped over the edge of the gimbal's housing



Step 2: Push the tungsten weights into the empty slots as needed to counter balance the camera's pitch.

The camera's pitch is properly counter balanced when the camera no longer rotates after setting a rotation in the pitch axis.



Step 4: Slide the loaded clip left/right to balance for the camera's roll.

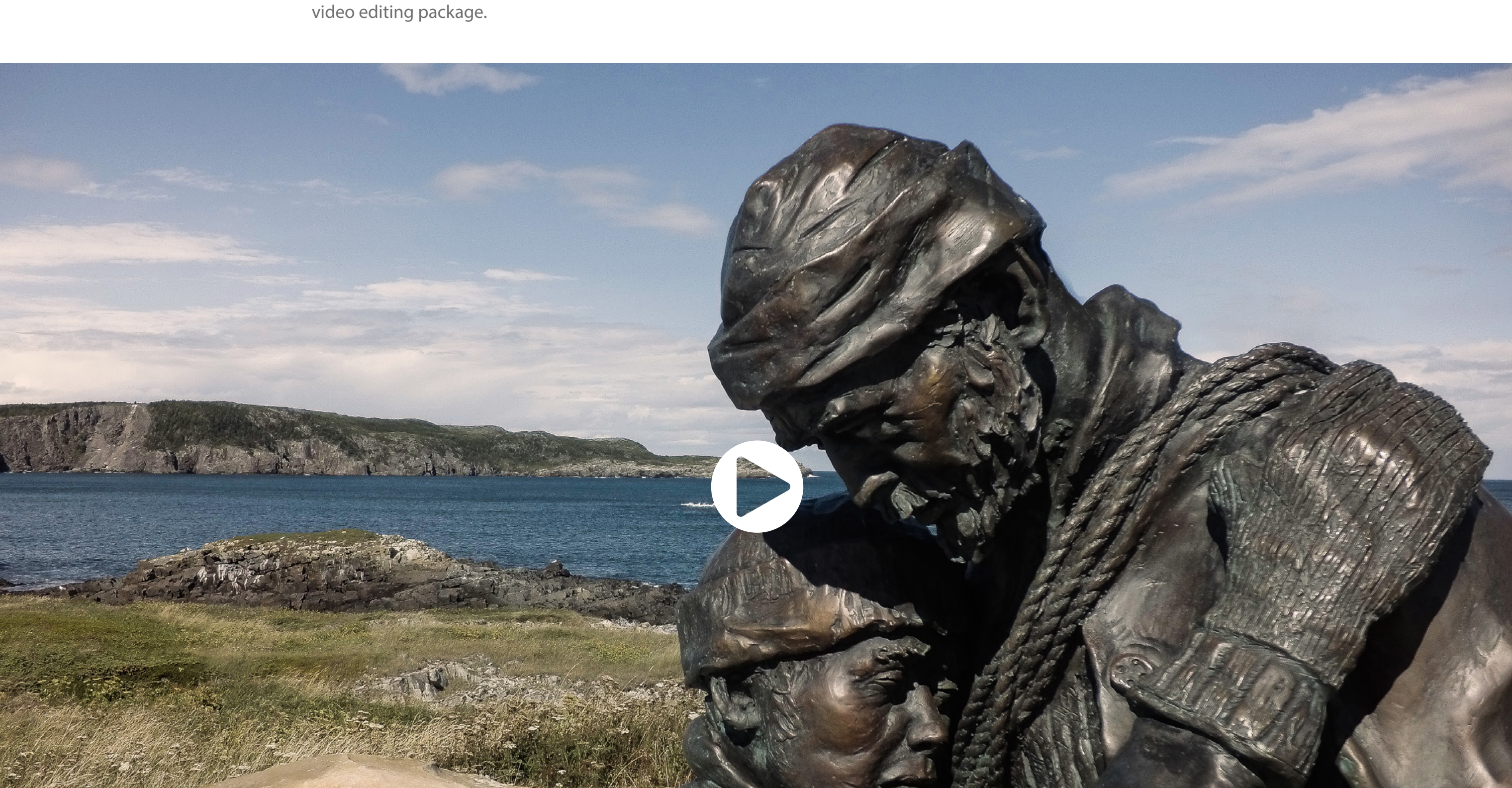
The camera's roll is properly counter balanced when the camera no longer rotates after setting a rotation in the roll axis.

Your custom camera/lens assembly is now properly counter balanced.

[Watch online video here](#)

Post-production:

With **GoPro's Protune** you can get much higher quality throughout your post-production and get more dynamic images from your camera. You can edit your pictures with **Adobe Photoshop** or **Lightroom**. **GoPro Studio** is also a great choice for post-processing your clips into a short video as is **Adobe Premiere** or any other video editing package.



Ribcage AIR: Newfoundland

This video features lots of great shots from the air with our Modified Hero4 Black cameras mounted on a 3DR Solo drone. The gimbals are balanced with our Dead Weight kit for Solo. Most handheld shots were performed with an Orbit Pole + a Z1 Rider 3-Axis Gimbal.

BACK-BONE

We would love to see what you have done with you Ribcage and be able to share it with the community!

info@back-bone.ca

