



## USING THE RIBCAGE'S NATIVE C-MOUNT FOR MICROSCOPES

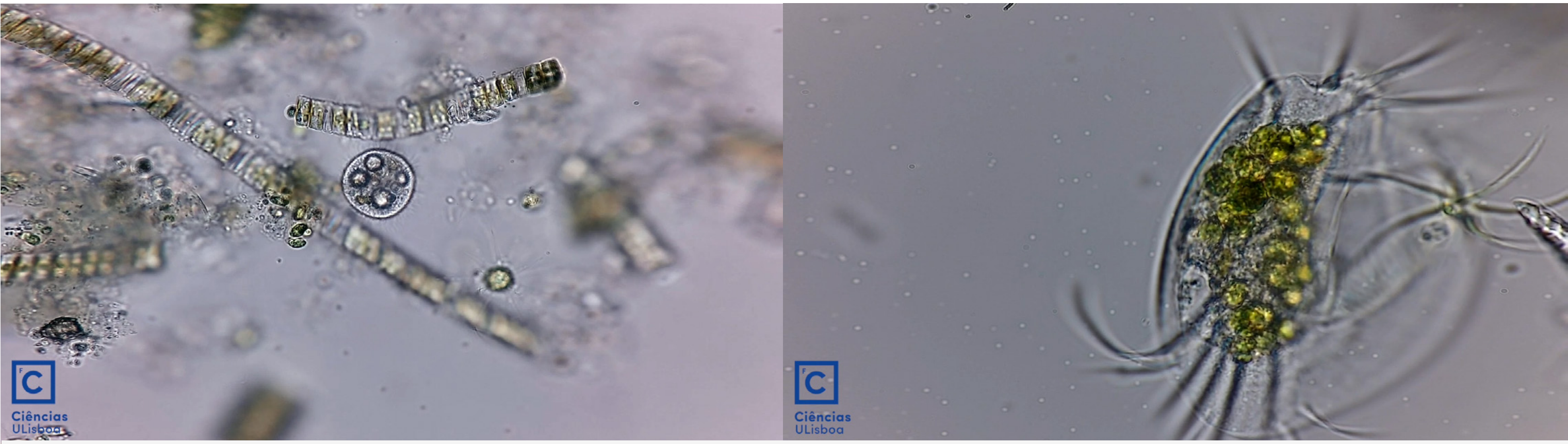
Never before has there been a more versatile camera than the **Ribcage AIR Modified GoPro Hero4**. Its small size, light weight and astonishing shooting options make it a pocket sized powerhouse. It features native CS & C-Mount lens support as well as M12 lens compatibility. Almost any popular lens type can be attached with optional adapters including Canon, Nikon, Pentax and more!

It's small size, powerful options and reasonable price make it a perfect option for microscopes and other scientific applications. C-Mount is commonly used in scientific and medical imaging equipment so the camera can be directly connected to many microscopes and telescopes! The image sensor makes it ideal for beam splitters that are designed for 1/2" C-Mount cameras and can also be attached in place of the eyepiece with a simple adapter. The camera is also capable of seeing infra-red for your custom applications. Filters are easily added or removed to the inside of the camera so you can image exactly the areas of the spectrum that you need.

### There are many benefits when using your Ribcage modified GoPro on a microscope:

Theses benefits include:

1. 4K recording
2. High resolution 12MP stills
3. Connection to high-res displays
4. Smartphone and tablet connectivity
5. Custom wavelength imaging
6. Compact size / portable
7. Remote control
8. Up to 240 fps (720p)



Still frames taken from recording of water mites by **Ciências ULisboa**

Still frames taken from recording of water mites by **Ciências ULisboa**

### What you will need:

1. Ribcage modified GoPro Hero3/3+/4 or Ribcage modified Yi 4K
2. Microscope
3. C-Mount eyepiece adapter / C-Mount beam splitter
4. Filters (Optional)
5. Micro HDMI cable (or Yi 4K A/V cable)



Close up look at the Ribcage modified GoPro on a standard microscope



C-mount adapter for microscope



Custom Ribcage filters

*"This is by far the best way to capture videos on the work I am doing."*

Other C-Mount imaging systems are often quite costly with substantially fewer options, weaker specifications and require an external power supply and controller. Our solution is available at a small fraction of the cost, is simple to operate, compact and portable. With our native C-Mount you can easily transfer the camera to other equipment as needed or pack it up and use it in the field. The camera can be permanently powered if required so shooting long segments or time-lapse sequences is a breeze.

### Getting started:

1. Add the C-Mount adapter to your Ribcage.
2. With your microscope, you will get a C-Mount support which you will need to screw on the Ribcage.
3. Insert the camera on the top of the microscope.
4. Make sure everything is turned on (camera and microscope).
5. You are now ready to start taking amazing shots!

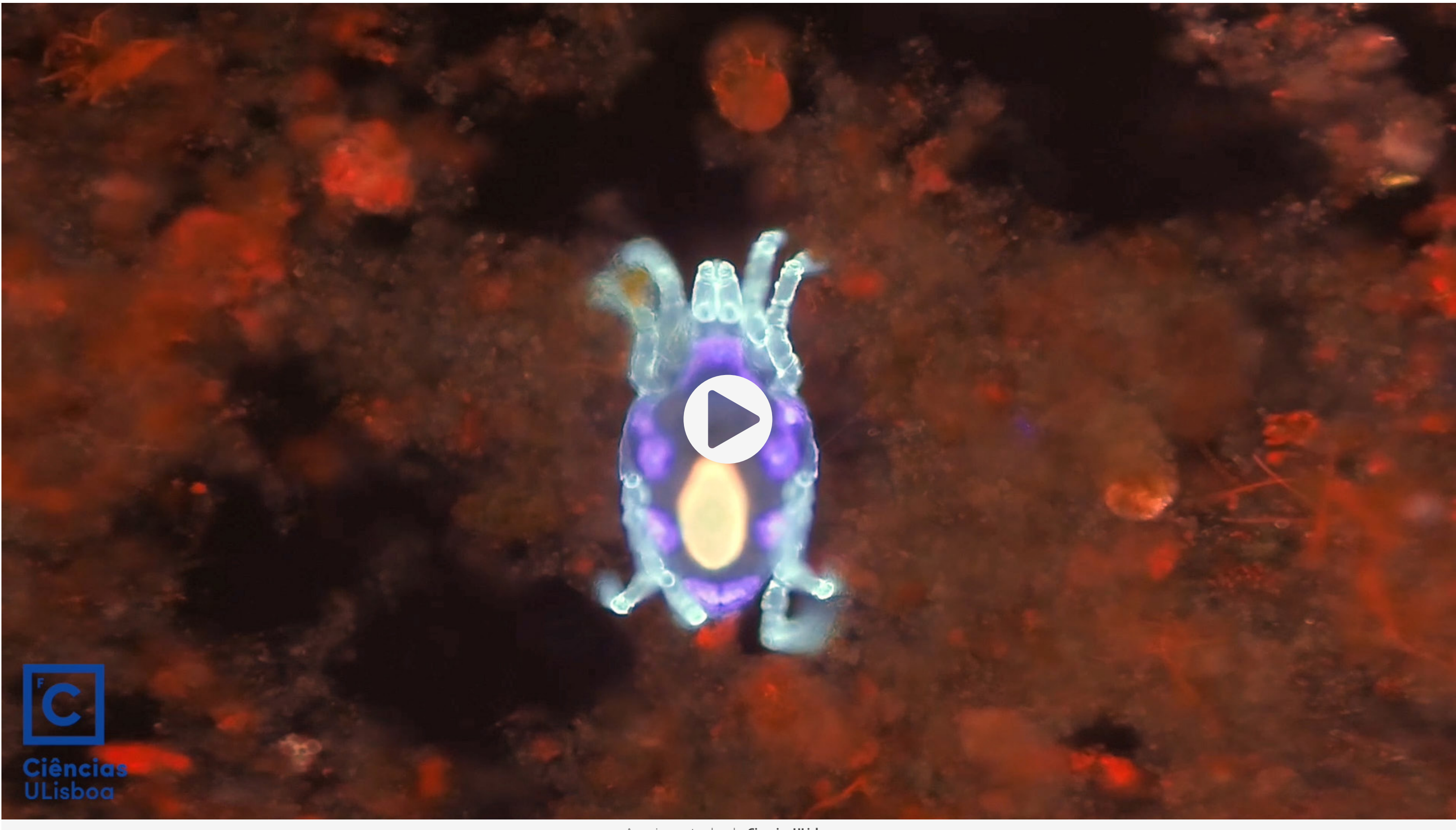


Ribcage with Microscope C-Mount to the side

Ribcage with Microscope C-Mount together

### Post-production:

With **GoPro's Protune** you can get much higher quality throughout your post-production and get more dynamic images from your camera. You can edit your pictures with **Adobe Photoshop** or **Lightroom**. **GoPro Studio** is also a great choice for post-processing your clips into a short video as is **Adobe Premiere** or any other video editing package.



Aquarium water drop by **Ciências ULisboa**